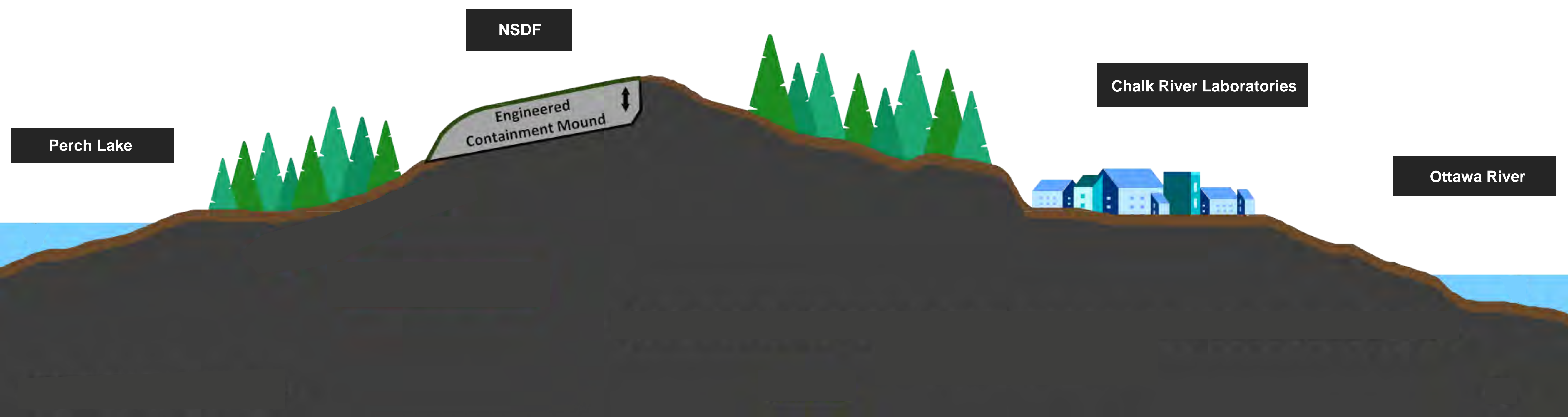


As part of revitalization, ongoing research and the cleanup mission at Chalk River Laboratories, CNL is proposing to build the Near Surface Disposal Facility (NSDF), a permanent solution for low-level radioactive waste.



A February 2022 survey of area residents showed that awareness of the NSDF has increased. Over half of residents surveyed from Renfrew County, Pembroke and Pontiac have heard of the project.



CNL is requesting a licence amendment to proceed with the construction of the NSDF.



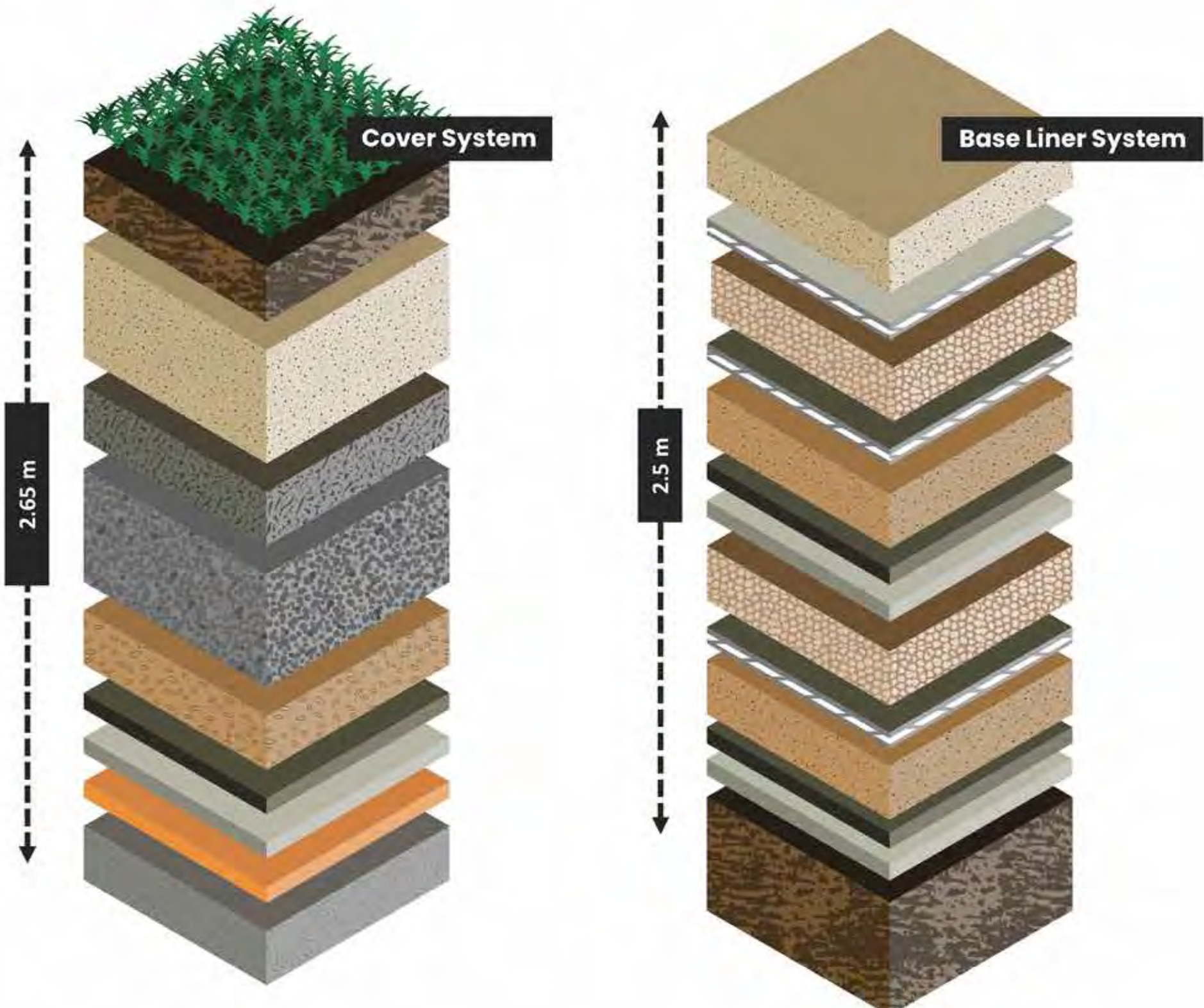
The majority of local residents surveyed have confidence in the regulatory review process.



The NSDF is internationally recognized best practice and a permanent solution. As the Canadian Nuclear Safety Commission review process continues, CNL encourages people to participate.

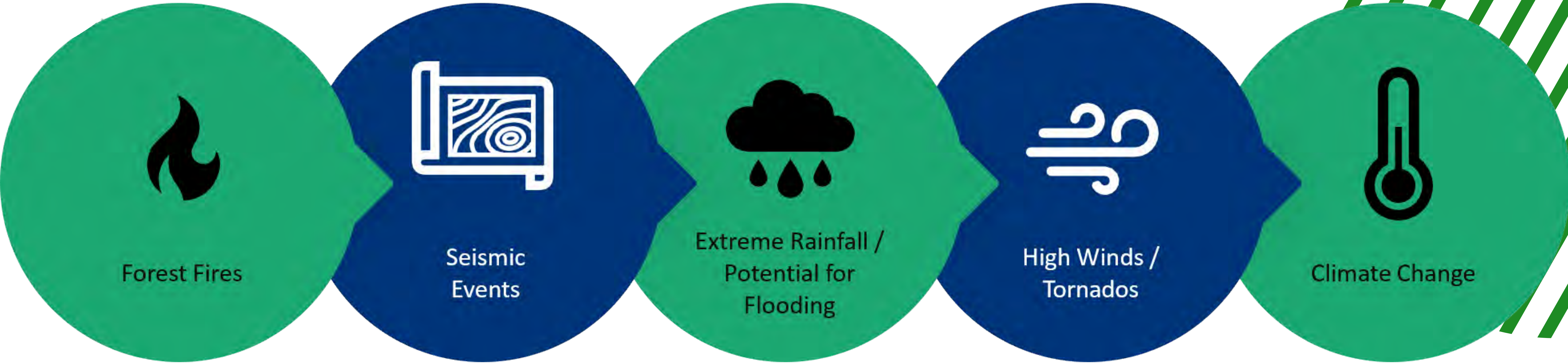
Did You Know?

NSDF has been designed to contain and isolate waste for more than 550 years.



The engineered containment mound features multiple layers of natural and synthetic barriers designed to work together.

The NSDF is designed to withstand the most extreme events.



Anyone with questions about the project can get in touch with our team at ERMStakeholder@cnl.ca.

NSDF is the responsible solution.



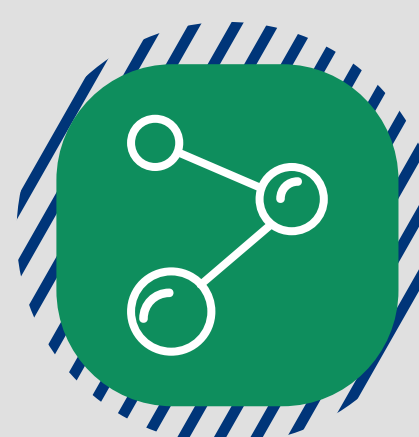
For more than 70 years, Chalk River Laboratories – Canada’s premier science and technology complex and the main site of Canadian Nuclear Laboratories (CNL) – has been home to life changing research and technology in support of **CNL’s core missions**:



Restore and protect
Canada’s environment



Clean energy for
today and tomorrow

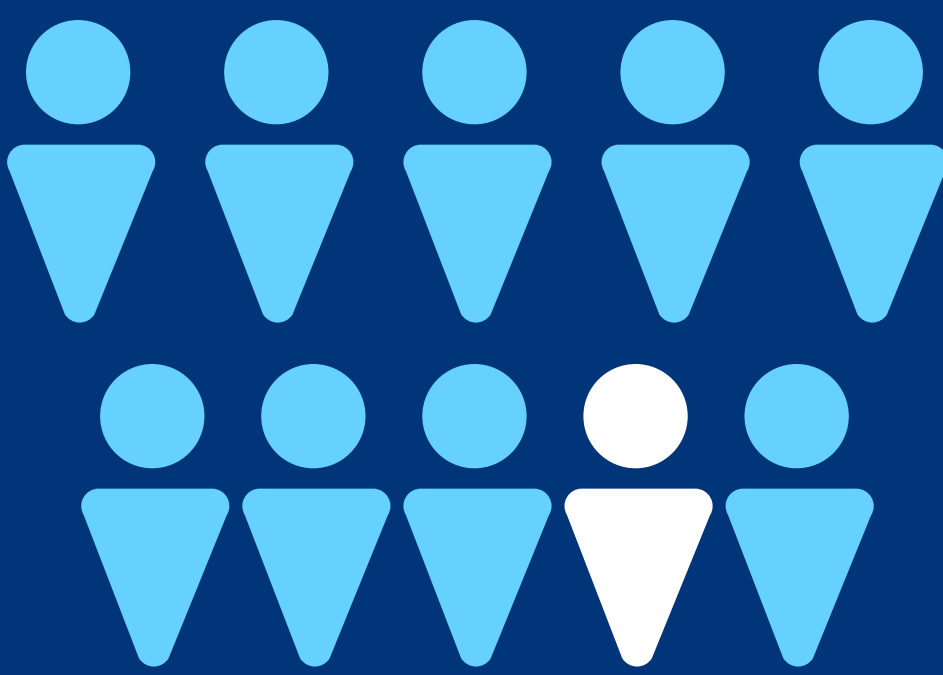


Contributing to the
health of Canadians

As part of CNL’s continuing efforts to engage with the the community about its work and ask for community feedback, Nanos Research conducted a phone survey of local residents from February 9–16, 2022.



Awareness of Chalk River Laboratories has increased over the years with over **nine** in ten residents having heard of it (up almost 10% from 2018)



CNL values our connection with the community and is committed to keeping neighbours informed about our work

How do you like to hear from CNL?



41%
Printed newsletter



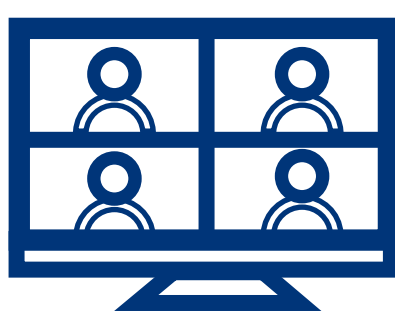
24%
Website



16%
Social media



17%
Online newsletter



12%
Bi-Monthly webinars

What do you like to hear about ?



Waste Management
and Safety



New & Ongoing
Projects



Health &
Environment



Contributions to
Medicine



Employment
Opportunities



Respondents identified CNL as one of the best places to work in the region.

48%

have a family member or
close friend who works at CNL

Chalk River Laboratories is located on the unceded territory of the Algonquin Anishnaabe people. CNL recognizes their connection to the land and is committed to continuing to work with Indigenous Peoples on the path to reconciliation.